

Connect

Learn

Sustain

# Love “SHAC” Ignite! Presentation



Rosemary C. Reilly-Chammat, Ed.D.

RI Department of Education



# Introduction

- Statewide SHAC in RI
- Leads 1308 work



# SHAC

- Parts
  - Partners
  - Meeting Times
  - Working Groups
  - Agreements



# SHAC

- Community of Practice



# SHAC

- Agenda to guide the meeting
- Expectations
- Deliverables
- Respect and honor time and talent



# Data is Key

- Building consensus
- Places to “dig” for more information
- Nuances, gray areas





# Data is Key

- PERS – How is my district doing?



# Data is Key

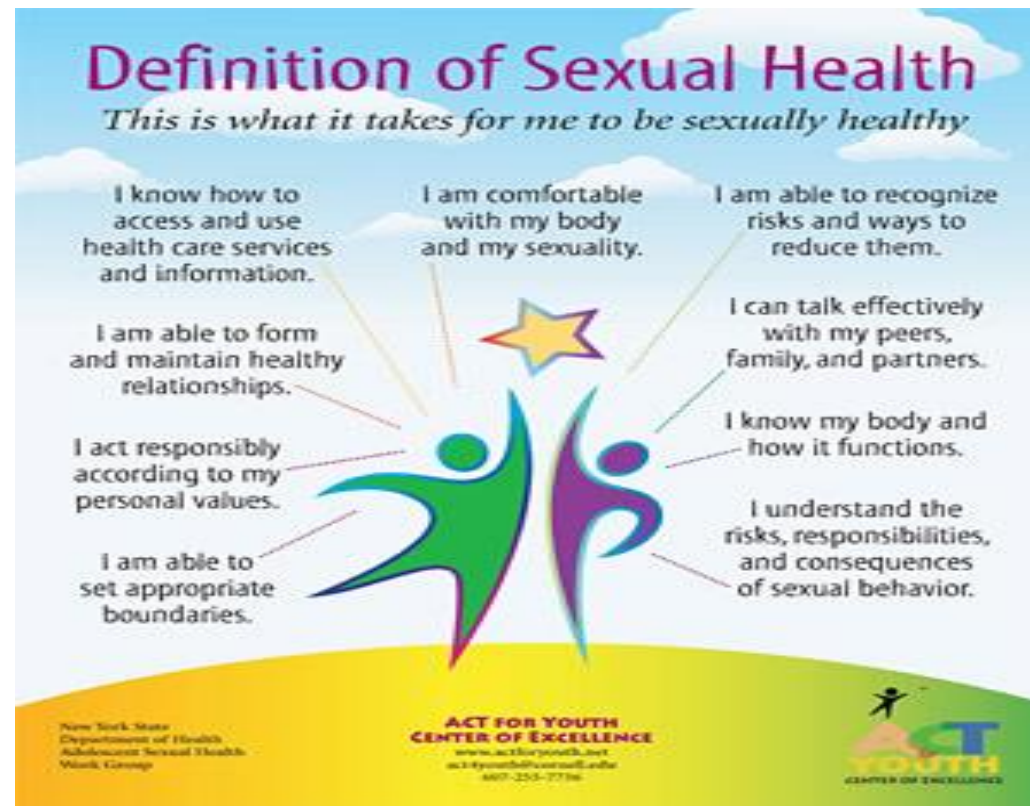
- School Health Profiles- How are we doing as a group of districts?





# Data is Key

- Youth Risk Behavior Survey



# Where Do We Want To Be



# ESHE example

- Is sexual health education happening in RI?



# ESHE Example

- Advocates For Youth





# ESHE example



**Rights, Respect, Responsibility:  
A K-12 Sexuality Education Curriculum**

# ESHE Example

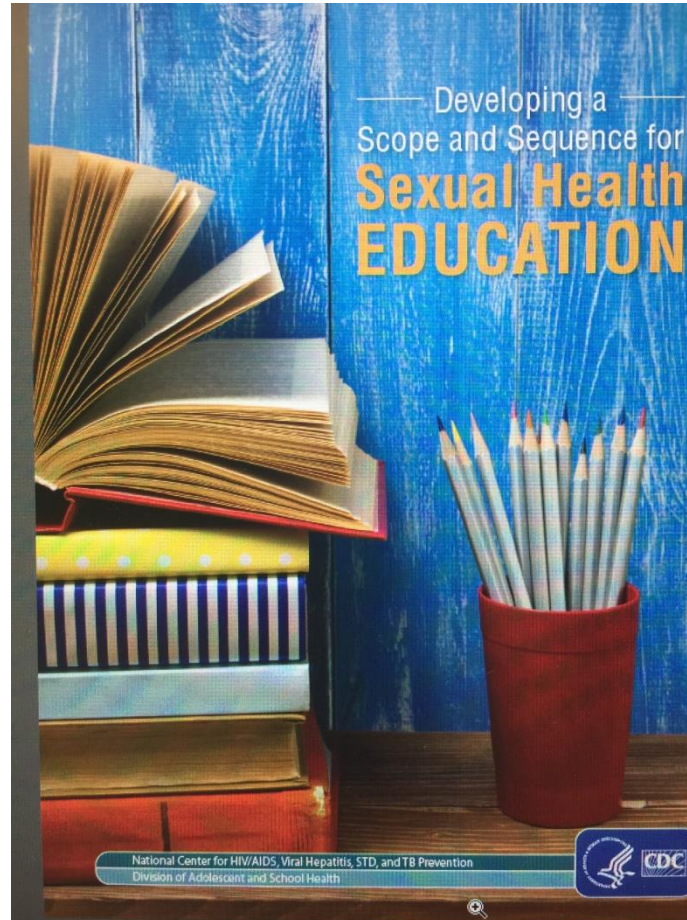
- SHAC Partners





# ESHE Example

- Identify next steps



# ESHE Example

Next Steps



# Connecting to the Big Picture Federal





# Connecting to the Big Picture State

- RIDE Strategic Plan



# Concluding statements

- United in goal to move forward
- Data driven
- White Paper reframed the conversation
- Connect the dots to federal and state priorities
- Ongoing efforts to support local educators in ensuring good health and education outcomes for youth.



# Final thought

